



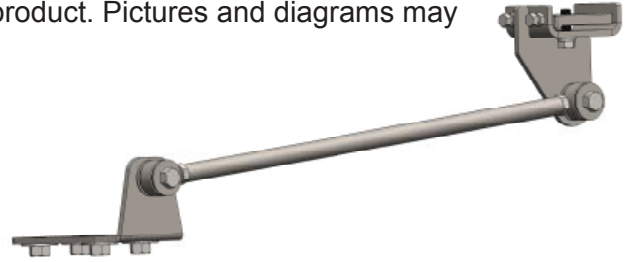
## **TT2300**

### **Workhorse & Chevrolet P-32**

### **Motor Home Chassis Rear Bar**

### **Installation Instructions**

Each installation may vary due to chassis manufacturing options and variations in design. The rod assembly may be installed in several different combinations, such as either front or rear of the supplied brackets as well as using different bracket holes. The important thing is to maintain clearance between your trac bar and any chassis component (moving and stationary) such as exhaust, vehicle frame, differential, or any other item which might interfere with the operation of this product. Pictures and diagrams may not represent the best installation for every application.



## **Special Notes:**

- Exhaust should exit ahead of rear wheels to provide adequate clearance. If the exhaust currently is routed over the rear axle it will require modifying the exhaust pipe.
- Although designed to be mounted with the axle bracket on either the driver or passenger side with the frame bracket on the opposing side of the axle, the typical installations have the axle bracket placed on the passenger side with the frame bracket on the drivers side.
- Some rear axles have a flat plate below the axle tube that allows our axle bracket to be placed up against it and tightened down with the supplied U-Bolt nuts. If you do not have a flat plate and it is rounded you will have to leave the OEM nuts in place and follow the next step.
- Measure U-Bolt length extending past the OEM nuts, which should be at least 1-1/2" long. If the U-Bolts are of this length, do not remove the four (4) nuts on the rear axle U-Bolts. Hold the axle bracket up into place and verify you will have at least two threads showing once tightened down. If you don't appear to have enough U-Bolt length then you must install longer U-Bolts (NOT INCLUDED).

### **NOTICE**

- Only a qualified mechanic using normal automotive tools and following all safety standards should perform the installation of this product.
- If the vehicle is equipped with air bags be sure that nothing interferes with the deployment of them.
- Be sure to use a sufficient amount of Loctite® Red on all bolts before tightening. Tighten all bolts according to the torque charts provided or to the manufacturer's torque specifications on OEM parts. If no manufacturer specifications can be found then use the torque charts provided.
- Dealer or installer be certain the user receives these instruction sheets.

# TT2300

## Workhorse & Chevrolet P-32 Motor Home Chassis Rear Bar

### Installation Instructions

#### Tools Required

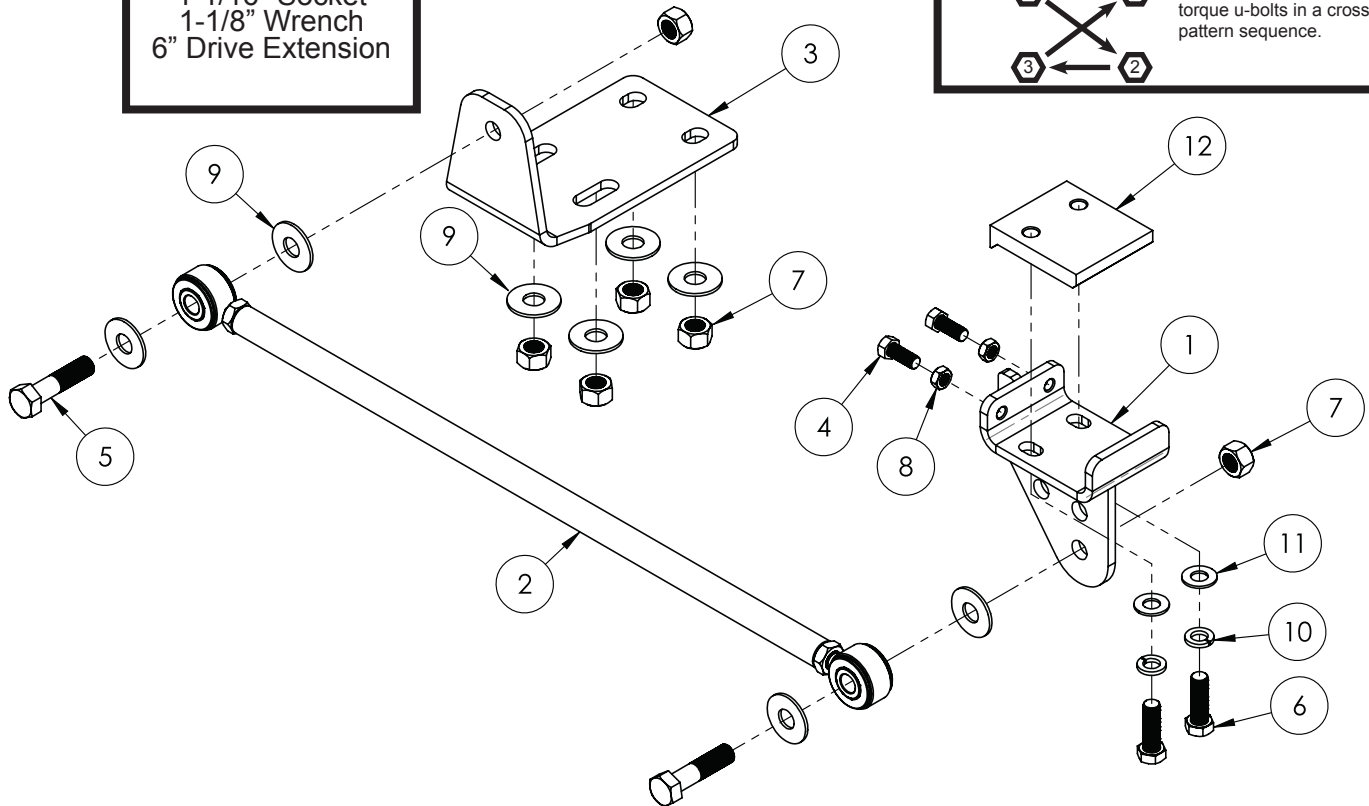
Torque Wrench  
 Loctite® RED  
 3/4" Socket  
 3/4" Wrench  
 15/16" Socket  
 1-1/16" Socket  
 1-1/8" Wrench  
 6" Drive Extension

#### Bolt Torque Specifications

Item #	Torque
4: Bolt 1/2" - 20 x 1.25"	40-50 #
5: Bolt 3/4"-16 x 3"	150 #
6: Bolt 5/8"-18 x 2"	80 #
7: Nut*** 3/4"-16	140 #
8: Jam Nut 1/2"-20	35 #



\*\*\*Always tighten and torque u-bolts in a cross pattern sequence.



Item No.	Part Number	Description	Qty.
1.....	61-6425 .....	TT2300 Frame Weldment .....	1
2.....	62-3625 .....	TT2300 Rod Assembly .....	1
3.....	101-7123 .....	TT2300 Axle Bracket .....	1
4.....	201-0308 .....	1/2"-20 x 1-1/4" Hex Head Bolt, Grade 5, ZP.....	2
5.....	201-0632 .....	3/4"-16 x 3" Hex Head Bolt, Grade 5, ZP.....	2
6.....	201-0912 .....	5/8"-18 x 2" Hex Head Bolt, Grade 5, ZP.....	2
7.....	202-0168 .....	3/4"-16 Stover Lock Nut, ZP .....	6
8.....	202-0184 .....	1/2"-20 Jam Hex Nut, Grade 5, ZP .....	2
9.....	203-0007 .....	3/4" Flat Washer, ZP .....	8
10.....	203-0013 .....	5/8" Lock Washer, ZP .....	2
11.....	203-0106 .....	5/8" SAE Flat Washer, ZP.....	2
12.....	229-0734 .....	Nut Plate Frame Bracket .....	1
13.....	190-0155 (not shown) .....	10-1/2" Loom .....	1
14.....	290-0275 (not shown) .....	8" Cable Tie .....	2

#### Important:

Use only genuine factory replacement parts on your trac bar. Do **NOT** substitute homemade or non-typical parts. If a bolt is lost or in need of replacement, for your safety and the preservation of your trac bar, be sure to use a replacement bolt of the same grade (In most cases it will be Grade 5, please reference the parts list above).

TT2300  
Workhorse & Chevrolet P-32 Motor Home Chassis Rear Bar  
Installation Instructions

## Installation Instructions

Before beginning work, position the vehicle on a level surface with the front wheels straight ahead and the coach sitting at normal ride height. Set the park brake and chock the wheels for added safety.

### Axle Bracket Installation

1. Determine which side of the axle will have the most thread exposed on the axle U-Bolts, the passenger side is the preferred side. If you have the flat plate style axle you can remove the OEM U-Bolt nuts and discard. If you have the rounded plate style you will leave the OEM U-Bolt nuts in place. Clean the U-Bolt threads with a wire brush. Install the axle bracket onto the U-Bolts with the supplied 3/4" washers (#9) and 3/4" lock nuts (#7) and torque to 140 ft. lb.

### Frame Bracket and Rod Installation

2. Install the frame bracket and nut plate to the frame rail. The frame must be between the nut plate and the TigerTrak frame bracket. The TigerTrak frame bracket is designed to be mounted to the bottom and sides of the frame rail. Position the bracket directly next to the rear frame cross-member (place the nut plate with lip facing down and towards the center of the vehicle). Make sure not to make contact with any wires, brake lines, ect.

3. Install the bolts through the bottom of the frame bracket and thread in to the nut plate. Use the supplied Loctite and tighten "just snug" for now, do not torque yet!

4. Install the jam nuts (#8) onto the 1/2"-20 (#4) bolts and install on the frame bracket. Tighten bolts alternately, slowly to push the nut plate against the inside of the frame rail. You will leave these bolts "just snug" for now, do not torque yet!

5. Install the rod assembly onto the axle bracket with one of the 3/4"-16 x 3" bolts, two of the 3/4" flat washers and one of the 3/4" lock nuts. Be sure that the flat washers are on either side of the urethane bushings. Position the frame bracket so it is straight with the axle bracket. Adjust the length of the rod assembly until you have the hole on the rod lined up with the frame bracket.

6. Install the rod assembly onto the frame bracket in the same manner as you did the axle bracket. Leave all of the bolts finger tight for now.

7. Once you have ensured that the frame and axle bracket are lined up as straight as possible, alternately tighten the 5/8" (#6) bolts on the frame bracket and torque to 80 ft. lb. Then torque the 1/2"-20 x 1-1/4" (#4) bolts on the frame bracket to 40-50 ft. lb. and the jam nut (#8) to 35 ft. lb.

8. Torque the 3/4" (#5) bolts on the rod assembly to 150 ft. lb.

### Finishing Up

9. The TigerTrak rod should be BELOW the rubber brake hose. Protect the brake hose with the included convoluted tubing to prevent rubbing and possible failure.

10. Double check all fasteners for proper torque value if indicated. If you have had the RV raised up while performing the installation, you will want to double check all clearances once weight is put back onto the suspension.

