



## TT2450 Ford E-450 Class C Rear Trak Bar Installation Instructions

Each installation may vary due to chassis manufacturing options and variations in design. The rod assembly may be installed in several different combinations, such as either front or rear of the supplied brackets as well as using different bracket holes. The important thing is to maintain clearance between your trac bar and any chassis component (moving and stationary) such as exhaust, vehicle frame, differential, or any other item which might interfere with the operation of this product. Pictures and diagrams may not represent the best installation for every application.



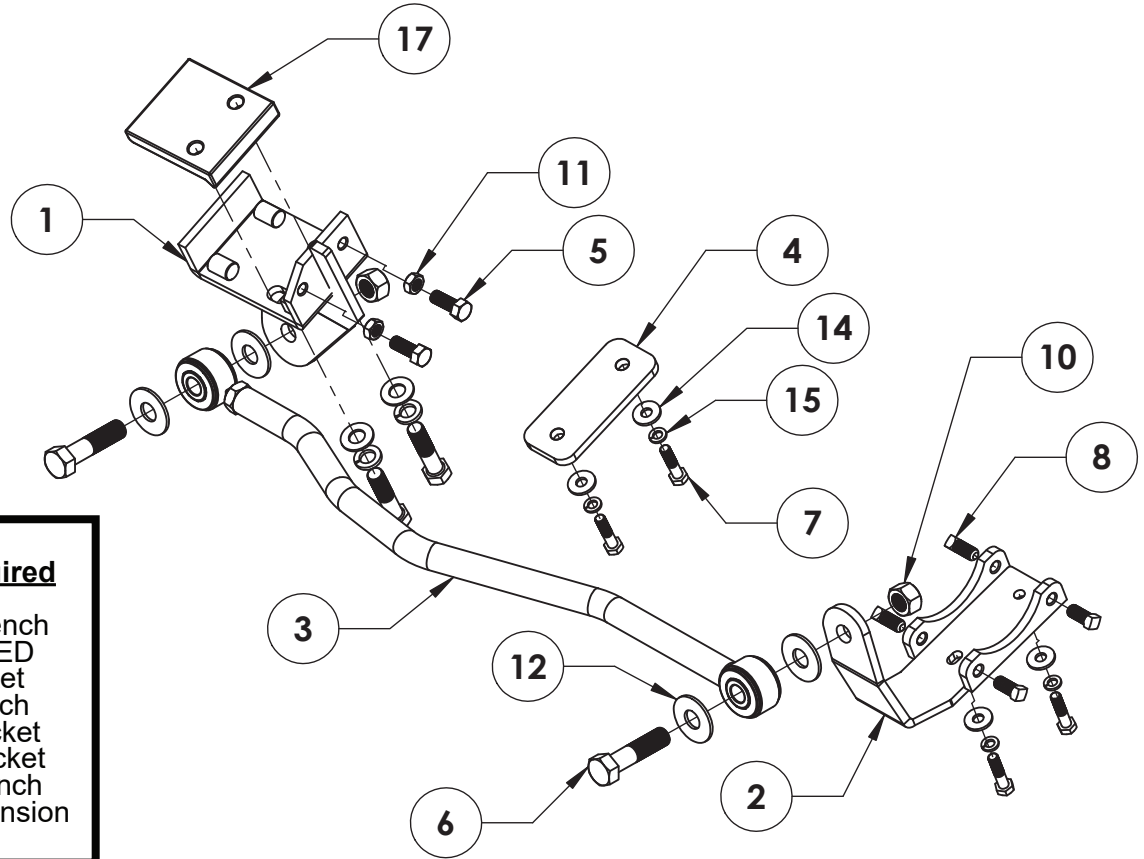
### ***NOTICE***

- Only a qualified mechanic using normal automotive tools and following all safety standards should perform the installation of this product.
- If the vehicle is equipped with air bags, be sure that nothing interferes with the deployment of them.
- Be sure to use a sufficient amount of Loctite Red on all bolts before tightening. Tighten all bolts according to the torque specifications provided or to the chassis manufacturer's torque specification on OEM parts. If no manufacturer specifications can be found, please contact us for assistance.
- Dealer or installer, be certain the user receives these instruction sheets.



# TT2450

## Ford E-450 Class C Rear Trak Bar Installation Instructions



- Tools Required**

  - Torque Wrench
  - Loctite® RED
  - 3/4" Socket
  - 3/4" Wrench
  - 15/16" Socket
  - 1-1/16" Socket
  - 1-1/8" Wrench
  - 6" Drive Extension

Item No.	Part No.	Description	Qty.
1.....	61-6439 .....	TT2450 Frame Bracket .....	1
2.....	61-6446 .....	TT2450 Axle Bracket .....	1
3.....	62-3627 .....	TT2450 Rod Assembly.....	1
4.....	101-7117 .....	TT2450 Spacer Plate .....	1
5.....	201-0308 .....	1/2"-20 x 1-1/4" Hex Head Bolt, Grade 5.....	2
6.....	201-0633 .....	3/4"-16 x 2-3/4" Hex Head Bolt, Grade 5, ZP .....	2
7.....	201-0815 .....	10MM-1.5MM x 40MM Hex Head Bolt, Grade 10.9 .....	4
8.....	201-0816 .....	1-2"-13 x 1" Square Head Cap Screw, Grade 5, ZP .....	4
9.....	201-0913 .....	5/8"-18 x 2-3/4" Hex Head Bolt, Grade 5.....	2
10.....	202-0168 .....	3/4"-16 Stover Lock Nut, ZP .....	2
11.....	202-0184 .....	1/2"-20 Jam Hex Nut, Grade 5, ZP .....	2
12.....	203-0007 .....	3/4" Flat Washer, ZP .....	4
13.....	203-0013 .....	5/8" Lock Washer, ZP .....	2
14.....	203-0103 .....	10MM Flat Washer, ZP .....	4
15.....	203-0104 .....	10MM Lock Washer, ZP .....	4
16.....	203-0106 .....	5/8" SAE Flat Washer, ZP.....	2
17.....	229-0734 .....	TT2450 Nut Plate .....	1
18.....	190-0155 (not shown).....	10-1/2" Loom .....	1
19.....	290-0275 (not shown).....	8" Cable Tie .....	2



## TT2450 Ford E-450 Class C Rear Trak Bar Installation Instructions

1. Position the vehicle on a level surface with the front wheels straight ahead and sitting at normal ride height. Set the parking brake and chock all wheels.

2. Begin by removing the 4 bolts, 2 on each side, that hold the factory anti-sway bar in place on the axle housing.

3. Before installing the axle bracket, install the 3/4" bolt for the rod mounting with the bolt head facing the axle tube.

4. On the passenger side, install the axle bracket underneath the factory anti-sway bar bracket with the supplied hardware.

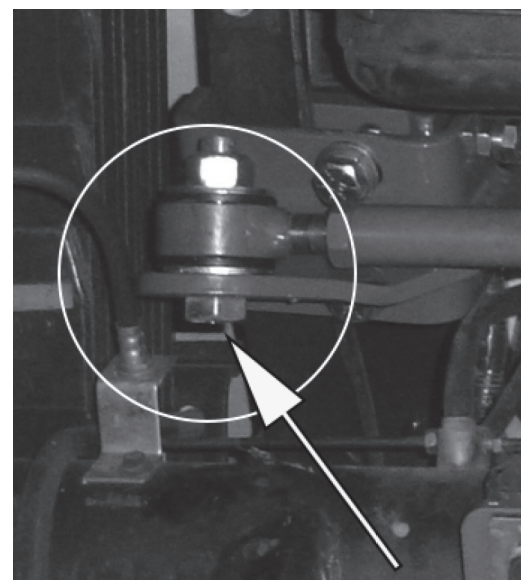
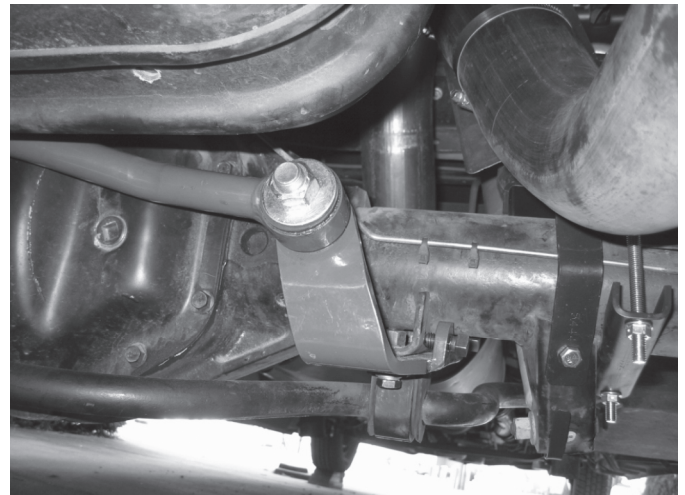
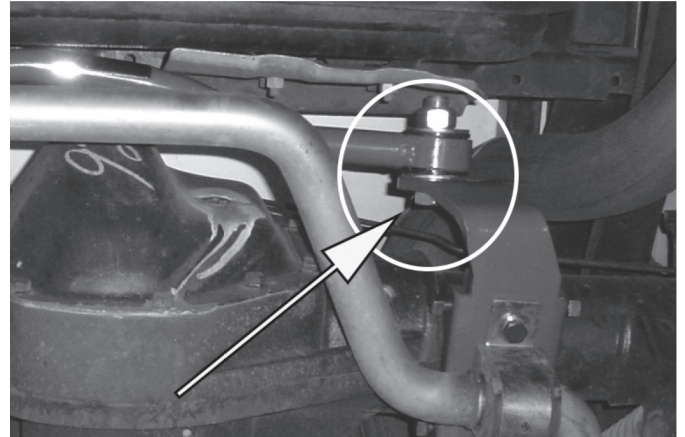
5. Install the set screws into the tapped holes on either side of the axle bracket. Put a drop of Loctite on each set-screw and tighten them so that they all equally contact the bracket that is welded to the axle housing.

6. On the driver side, install the spacer plate between the anti-sway bar bracket and axle with the supplied hardware.

7. Before installing the frame bracket, install the 3/4" bolt for the rod mounting so that the bolt head will be facing the axle tube.

8. Position the frame bracket onto the driver side frame rail next to the rear frame cross-member and secure it in place (hand tight for now) using the 5/8"-18 x 2" bolts, 5/8" lock and flat washers through the bottom of the frame bracket and into the nut plate.

9. Hand tighten the two 1/2"-20 x 1-1/4" bolts with the 1/2"-20 jam nuts into the frame bracket. This bracket needs to be loose enough on the frame rail to slide back and forth to line it up with the axle bracket.





## TT2450 Ford E-450 Class C Rear Trak Bar Installation Instructions

10. Install the rod assembly onto the rear of the axle bracket using the 3/4" bolt that you installed in step 3. Be sure you put the 3/4" flat washers on either side of the urethane bushing and then install the 3/4" lock nut hand tight.

11. Position the frame bracket so that rod mounts to the rear of the axle bracket and adjust the length of the rod assembly until you can slide the rod end onto the 3/4" bolt you installed in the frame bracket in step 7. Be sure you put the 3/4" flat washers on either side of the urethane bushing and then install the 3/4" lock nut hand tight.

12. Tighten the 1/2"-20 bolts on the frame bracket until the nut plate is pushed securely to the inside of the frame rail and then torque the jam nuts to 35 lb-ft.

13. Alternately tighten down the 5/8" bolts on the frame bracket and torque to 80 lb-ft.

14. Torque the 3/4" rod bolts to 150 lb-ft.

15. Inspect installation area for any wiring or hoses that may rub against the brackets and secure them in a safe position with the loom and/or cable ties provided.

16. Re-check torque on bolts after approximately 500 miles.

